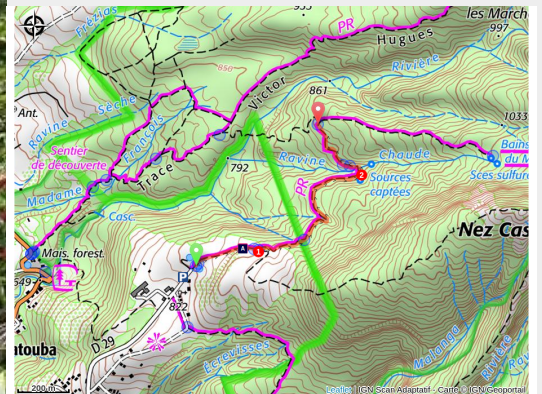


Papaye – Bains Chauds Matouba liaison

Basse-Terre Sud



chemin au départ (PNG)



Trail linking 'Papaye' and the Matouba hot springs.

Useful information

Practice : Walking

Duration : 1 h

Length : 1.3 km

Trek ascent : 112 m

Difficulty : Medium

Type : Cross

Themes : Agricultural landscape

Trek

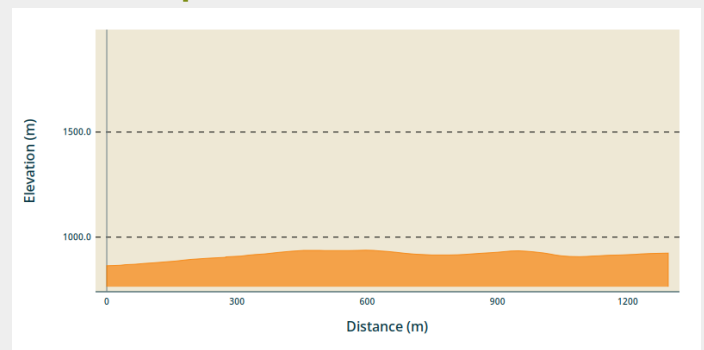
Departure : behind the water tower, above the Matouba/Papaye clinic, Saint-Claude.

Arrival : crossroads with the Matouba/Bains Chauds trail

Markings : — PR (short hike network)

Cities : 1. Saint-Claude

Altimetric profile



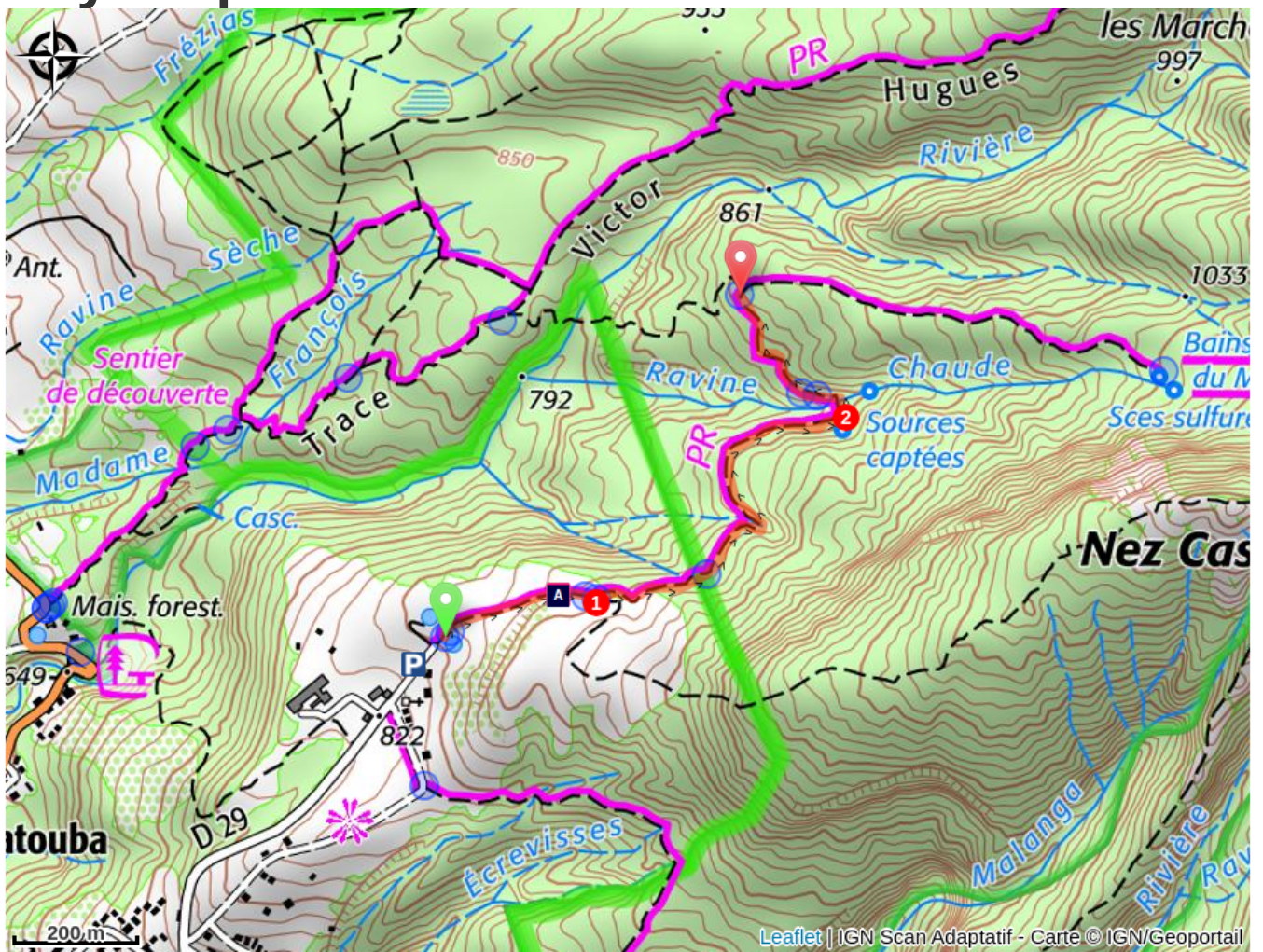
Min elevation 864 m Max elevation 938 m


Hiking trail colour : yellow.

The path starts behind the water tower. Set out on the path. At the end of the fields, go slightly downhill on the left to enter the forest (Point 1); you will see an information panel. The trail then carries on in the forest. Pass close to a water catchment area (Point 2). Follow the path to its crossroads with the Matouba/Bains Chauds trail.

(To go to the site of the Bains Chauds (hot springs), turn right at the crossroads and continue for 30 minutes from that junction. Return by the same route).

On your path...



 Viewpoint (A)

All useful information

Is in the midst of the park

The national park is an unrestricted natural area but subjected to regulations which must be known by all visitors.

Advices

As Guadeloupe is prone to natural risks, extra care should be taken in this natural environment. For the benefit of all hikers, responsible behaviour is very important.
Please note: the parking is not supervised.

How to come ?

Transports

En Guadeloupe, 2 applications pour le covoiturage :

Dépozé : <https://depoze.fr>

KAROS : <https://www.karos.fr>

Access

Start point : Lat : 16,04613°N - Long : 61.68570°W.

In the town of Saint-Claude, pass La Poste (the post office), turn left on to Avenue du Maréchal Foch, then pass in front of the Pavillon du Tourisme and the Hôtel de Ville (town hall). At the stop in front of the church, turn right on to the RN3 which goes up towards Matouba.

When you reach the town of Matouba, head for 'Papaye'. Continue as far as the clinic. The path starts above the water tower.

i Information desks

Headquarters of the National Park of Guadeloupe

Montéran, 97120 Saint-Claude

info@randoguadeloupe.gp

Tel : 0590 41 55 55

<http://www.guadeloupe-parcnational.fr/fr/des-decouvertes/ou-sinformer/siege-de-saint-claude>



Source

Rando Guadeloupe

<https://www.randoguadeloupe.gp/>

On your path...



Viewpoint (A)

There is a viewpoint over the Basse-Terre mountain chain to the north east (Grande Découverte, Sans-Toucher) and over Basse-Terre to the south west.

Attribution : PNG